

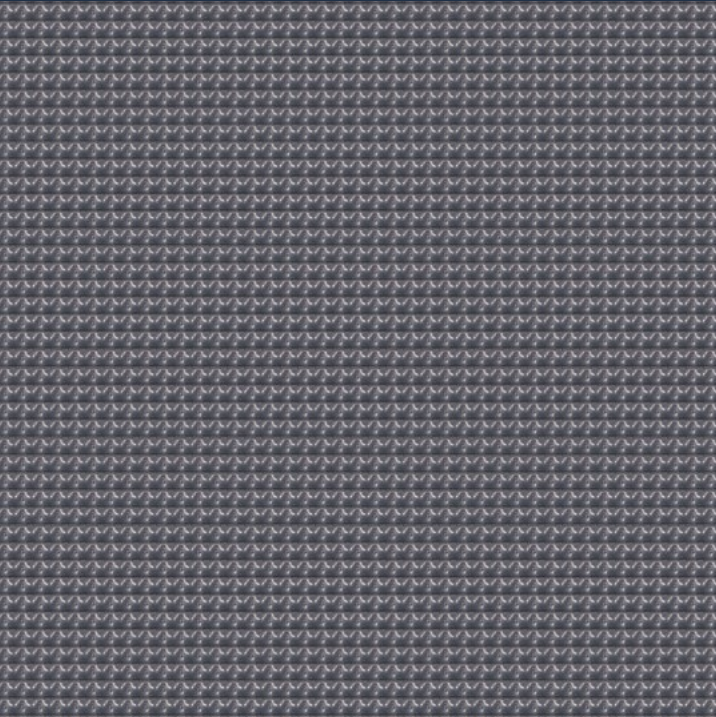
EvaLay
BY **TERRA MATER**

**High Performance
Underlay Solutions**



TERRA MATER

High Performance Underlay Solutions.



EvaLay underlay for every floor. Every floating floor installation deserves an everlasting underlay.

To maximise the performance of your floating floor installation, a high density, high durability underlay is essential. Underlay is essential to allow the floor to float and provides stability, noise reduction and helps support the locking system in between planks. So the underlay you choose needs to be up to the task. That's why Terra Mater recommends EvaLay underlay.

EvaLay underlay - for every floor and every installation.

All measurements were carried out following the guidelines and procedures outlined in AS/NZS ISO 140.7:2006 "Field measurements of impact sound insulation of floors" with the rating determined as per AS ISO 717.2-2004 "Rating of sound insulation in buildings and of building elements".

Terra Mater has been advised by Koikas Acoustics that the ceiling/floor system between the residential units is constructed with the following building materials: that the ceiling/floor system between the residential units is constructed with the following building materials:

- Approximately 200mm thick concrete slab;
- 50mm - 150mm suspended ceiling cavity, and
- 13mm thick plasterboard ceiling.

EvaLay

6 STAR RATING ★★★★★★

Roll Size:	20m ²
Roll Width:	1m
Roll Length:	20m
Roll Overlap:	90mm
Water Barrier Film:	80um
Thickness:	2mm
Density:	110kg/m ³

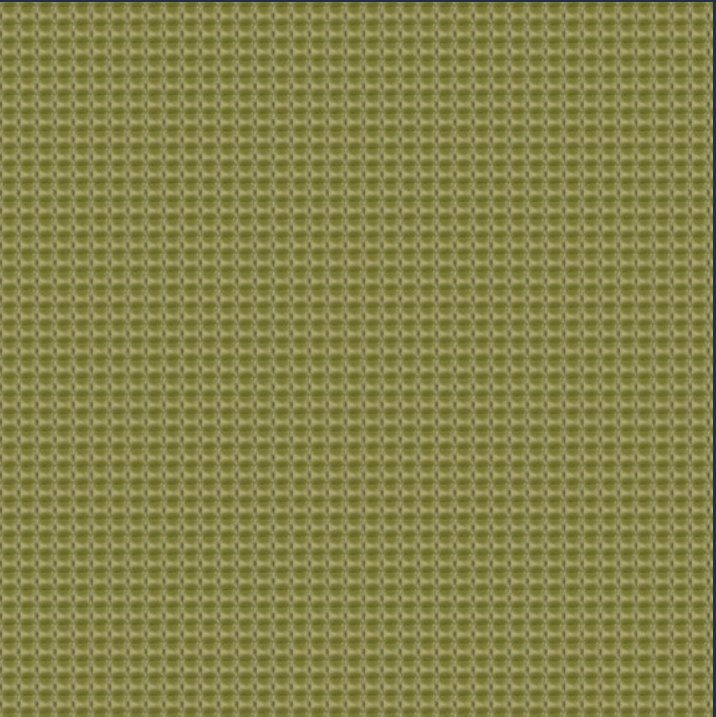
Acoustic Performance

Impact noise insulation performance summary for ceiling/floor system			
	L'nTw	Equivalent AAAC Star Rating	FIIC
Engineered Timber 14mm flooring with 3mm EVA Acoustic underlay	41	5	63
Engineered Timber 12mm flooring with 3mm EVA Acoustic Underlay	42	5	63
12mm Laminate flooring with 3mm EVA Acoustic Underlay	38	6	72
8mm Laminate flooring with 3mm EVA Acoustic Underlay	42	5	67
Engineered Timber 14mm flooring with 2mm EVA Acoustic underlay	38	6	71
Engineered Timber 12mm flooring with 2mm EVA Acoustic Underlay	40	6	70
12mm Laminate flooring with 2mm EVA Acoustic Underlay	38	6	72
8mm Laminate flooring with 2mm EVA Acoustic Underlay	40	6	70

EvaLay Plus

6 STAR RATING ★★★★★★

Roll Size:	20m ²
Roll Width:	1m
Roll Length:	20m
Roll Overlap:	110mm
Water Barrier Film:	100um
Thickness:	3mm
Density:	110kg/m ³





Terra Mater - Melbourne
15 Rangebank Drive
Cranbourne West VIC 3977
Australia
1300 671 777

sales@terramaterfloors.com.au

Terra Mater - Sydney
1 Lennox Place
Wetherill Park NSW 2164
Australia
1300 671 777

sydneysales@terramaterfloors.com.au

www.terramaterfloors.com.au