

## Customers or installers responsibility prior to the installation of flooring products.

**It is highly recommended that all our flooring is installed by a qualified and experienced contractor.**

It is the installers/customers responsibility to carry out an inspection of the delivered flooring product prior to installation to ensure the colour, grade, gloss level, structural quality and finish are acceptable.

**It must also be confirmed that the correct product, as per viewed samples, has been delivered to site. If the product is deemed not acceptable, do NOT install it and contact your supplier immediately. If the product is installed it will be considered to be acceptable to the customer and the supplier will take no further responsibility.**

ResiPlank Hybrid flooring should never be stored outdoors, or any area of potential damage. Care should be taken to store the packs flat; packs should never be lent against a wall.

ResiPlank Hybrid flooring does not need to be climatized on site if stored within the normal temperature range of 18 to 26 degrees Celsius. If exposed to extreme temperatures outside this range for 12 hours prior to installation it is essential the product be acclimatised in the correct temperature range for 48 hours.

A waste factor of approximately 5 to 10% should be ordered to complete any sorting, cutting or visual selection during installation.

## Levelling and subfloor requirements

**Subfloors are to be made flat through grinding and/or levelling to the following ATFA and Australian Standards AS 1884:2012.**

**ResiPlank Hybrid floors: Not to exceed 3 mm under a 3 meter straight edge.**

Timber and concrete subfloors must also be checked for high moisture prior to installation. All flooring contractors should possess moisture meters for concrete and timber sub-floors. High readings can be caused by poor drainage or leaks and will affect the finished flooring if not rectified. Although ResiPlank Hybrid are highly resistant to moisture, it must be noted that if the subfloor is damp below the product issues such as odours and mould growth can occur.

Any timber substrate issue should be checked for structural integrity by a registered contractor prior to installation.

The flooring can be installed over many existing floor coverings such as ceramic tiles, PVC tiles and linoleum. This flooring must be flat, level, dry and securely fixed. In the case of ceramics the grout lines must not exceed 3mm in width or depth. Grout lines can be filled with a suitable industry approved leveller if in excess of this.

## Installation Instructions

**ResiPlank Hybrid can only be installed as a floating system.**

The span of both the width and length of the floor should not exceed 15 x 15 meters (705 range) and exceed 20 x 20 meters (855 and 977 range). Expansion joints should be fitted to compartmentalise a larger floor area so it can move correctly as a raft. This can be done in doorways or natural transitions from one area to another. At doorways or transitions the door jambs, or frames needs to be undercut well and all material removed for the timber floor to slide under and move freely. A gap of 1mm is recommended above the surface of the product.

As ResiPlank Hybrid is supplied fitted with high density EVA 2mm foam underlay (855 and 977 range) EVA 1.5 foam underlay (705 range) on the underside, the use of other underlays is not recommended.

If product adhered to the stairways, it is highly recommended to remove the high density foam prior to application of the adhesives.

If installed in wet areas such as bathrooms and laundries the flooring should be fitted with our matching expansion joints at the entrance to the room to allow for the correct movement.

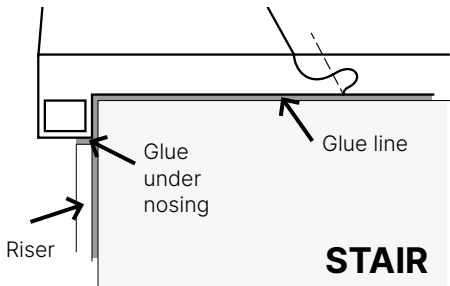
**The installer must use reasonable selectivity and remove any faulty boards that should not be laid or dock any faults to ensure the finished floor meets industry and customer standards.**

As a general rule we recommend at least 8 to 10 mm expansion gap be allowed around the perimeter of a floating hybrid floor. At no point should the flooring be in contact laterally with any solid structure. The flooring must be allowed to move independently or damage will occur, such as cupping, peaking, gapping or squeaking.

Flooring on stairs must be directly stuck with the appropriate polyurethane / MS adhesive to the existing tread & riser, matching stair nosing to be fitted on the front edge of each step. Also please make sure that the stair nosing meets the slip test guidelines for each state in Australia.

For the purposes of AS1428 & AS4586 ResiPlank Hybrid stair nosing is rated to P2. This will be insufficient for many installations and additional stair nosing treatment will be required for compliance. We recommend applying Anti-Slip Tape which can be supplied through your retailer.

When fixing ResiPlank Hybrid matching stair nosings it is vital that the riser below is fitted under the overhang of the nosing for support (see drawing, page 2). It is recommended that a Polyurethane or MS timber flooring adhesive, such as Acouslime is used to fixed the ResiPlank Hybrid products to the existing stair. The adhesive should be applied as per manufacturers directions to all surface as detailed in the drawing, especially to the rear of the nosing overhang that is attached to the riser. The EVA backing on the ResiPlank Hybrid product does not have to be removed prior to fixing.



## Installation over hydronic underfloor heating

The in-slab underfloor heating needs to be started and run at the desired temperature for at least 2 weeks prior to the installation of flooring.

**NOTE:** The slab surface temperature must not exceed 26 degrees Celsius at any time.

After 14 days, turn off the slab heating and allow 4 days to pass in order to allow the subfloor to cool down and reach room temperature before installation.

After floor installation is complete, your flooring requires gradual acclimatisation in conjunction with the heating system.

The heating system temperature is to be increased by 2 degrees increments each day until the desired temperature is reached (not exceeding 26 degrees Celsius) and when turning heating off, also decrease by 2 degrees increments each day until it is off.

Shrinking between boards, cracking and minor cupping can be expected when installing hydronic underfloor heating and does not constitute as a product defect.

**If the flooring product has a 5G or drop locking system and is floated over a heated slab it is required that Crosslinked PVA glue be used as per the regular tongue and groove installation.**

**No other form of underfloor heating is recommended.**

## Post Installation

We do not recommend adhesive tape is applied to any of our flooring products.

Never use any of the following products (or similar in nature) on your floor: ammonia-based cleaners, acrylic finishes, wax-based products, bleach, polishes, oil soap, abrasive cleaning soaps, or acidic materials such as vinegar. Many of these products pit or etch the finish of your flooring or prevent the proper use of recommended maintenance materials.

**All trims or skirting must be fitted with a 1mm clearance gap above the flooring to allow for the correct raft movement. Trims or skirting must not be fitted to the flooring product. The 1mm gap must not be caulked or siliconed in any way.**

During installation, no adjacent end joints should be closer than 200mm apart or any end boards less than 200mm in length.

Although waterproof the product should not be installed in areas of excessive moisture such as outside areas, saunas or around pools.

After installation, if other trades are still to complete their work, a breathable protective covering should be installed over the flooring. Non breathable plastic should not be used as this will damage the product due to change of temperature and moisture. The flooring must be clean and clear of any debris prior to fitting of protection.

**It is also highly recommended that during the installation process the correct PPE (Personal Protection Equipment) is used by the installer. These include P2 rated face masks, protective glasses or face shield, steel capped boots and protective work gloves.**

**IMPORTANT: If any heavy objects such bookcases, billiard tables, kitchen units, that exceed 200kg/object area or if the load is greater than 30kg/cm<sup>2</sup> is to be installed over the floating system please contact our office for confirmation of suitability. If this assistance is not sort damage can occur due to incorrect expansion and lack of correct raft movement.**

**We do not recommend adhesive tape is applied to any of our flooring products.**

Eternity 705

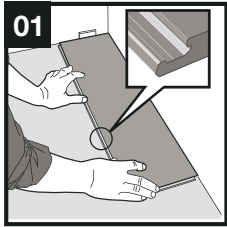
Corsica 855

Summit 977

Terra Mater

23-27 Rodeo Drive, Dandenong South VIC 3175 Australia | 1300 671 777 | sales@terramaterfloors.com.au | www.terramaterfloors.com.au

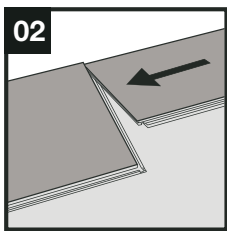
## Installation of 5G Click systems



### First plank, first row

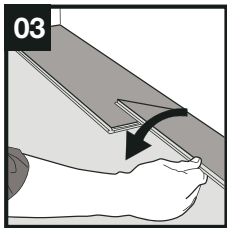
Place a spacer with predicted thickness to the left and position the panel against the wall.

Later, after 3 rows, you can easily position the flooring against the front wall with predicted spacers.

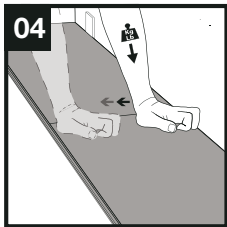


### Second plank, first row

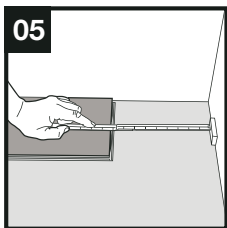
Place this panel gently close to the short end of the first one.



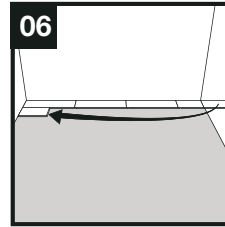
When folding down it is important to start from the corner closest to the previous row, folding down towards the center, and continue towards the opposite long side. During the fold down, make sure the panels are close to each other.



Afterwards press slightly along the short end just installed.

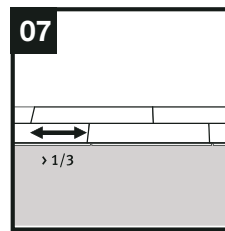


At the end of the first row, put a spacer to the wall and measure the length of the last plank to fit.

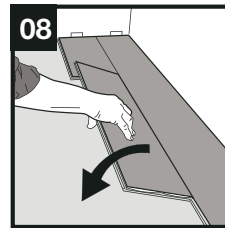


### Second row

First plank min length 400 mm. Put a spacer against the left wall.

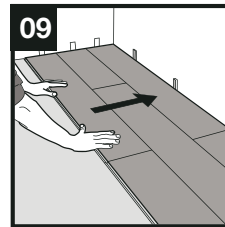


Staggered joint distance i.e. minimum distance between short ends of panels in parallel rows shall not be less than the given length.



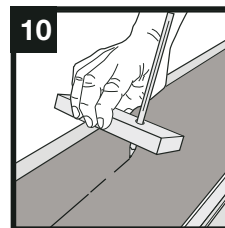
### Second plank second row

Place the panel gently and close to the short end of the previous panel and fold it down in a single action movement.



### After 2-3 rows

Adjust the distance to the front wall by placing spacers.



### Last row (and perhaps also first row)

Minimum width 50 mm. Place a spacer to the wall before measuring. Make a simple drawing tool (piece of wood with a hole) and mark the panel along the wall. Cut the panels lengthwise including the flexible tongues.

If the product needs to be removed the floor should be raised carefully to approximately 30 degrees and then slid outwards along the locking system. The product must not be pulled upwards as this will potentially damage the locking system.

Eternity 705

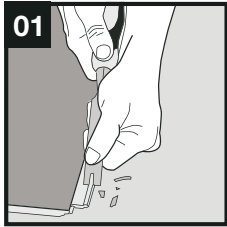
Corsica 855

Summit 977

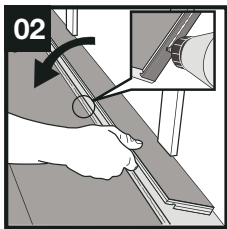
Terra Mater

23-27 Rodeo Drive, Dandenong South VIC 3175 Australia | 1300 671 777 | sales@terramaterfloors.com.au | www.terramaterfloors.com.au

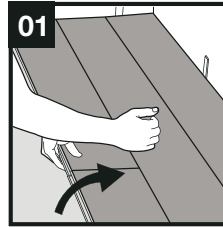
## When angling is not possible



Remove the vertical locking part of the strip with a chisel, put applicable glue on the strip and push the planks horizontally together. Place some spacers between last board and the wall.



## Dismantling panels



Separate the whole row by carefully lifting up and release the whole row. Fold up the row and release the whole long side.



Disassemble the panels by sliding the short ends horizontally.

**Never fold up a panel, as this damage the profile.**

Eternity 705

Corsica 855

Summit 977

**Terra Mater**

23-27 Rodeo Drive, Dandenong South VIC 3175 Australia | 1300 671 777 | sales@terramaterfloors.com.au | www.terramaterfloors.com.au