

## Installation Instructions

**Customers or installers responsibility prior to the installation of flooring products.**

**It is highly recommended that all our flooring is installed by a qualified and experienced contractor.**

It is the installers/customers responsibility to carry out an inspection of the delivered flooring product **prior** to installation to ensure the colour, grade, pattern irregularities, structural quality, gloss and finish are acceptable.

**It must also be confirmed that the correct product, as per viewed samples, has been delivered to site. If the product is deemed not acceptable, do NOT install it and contact your supplier immediately. If the product is installed it will be considered to be acceptable to the customer and the supplier will take no further responsibility.**

A waste factor of approximately 5 to 10% should be ordered to complete any sorting, cutting or visual selection during installation.

NuCore should never be stored outdoors, on a cement floor, in a garage or in any damp conditions. Care should be taken to store the packs flat, in a dry and safe environment. Packs should never be lent against a wall.

NuCore does not need to be climatized on site. The product should be installed from the carton. Its moisture content should be checked by the installer before installation with a moisture meter to be certain that the flooring has not dramatically changed moisture content since it left the supplier warehouse. Approximately 5-6% MC .

All flooring contractors should possess moisture meters for the timber flooring and concrete and timber sub-floors.

## Levelling and subfloor requirements

**Subfloors are to be made flat through grinding and/or levelling to the following ATFA and Australian Standards AS 1884:2012.**

**Floating Engineered Floors: Not to exceed 3mm under a 1-meter straight edge.**

Timber subfloors must be checked for high moisture prior to installation. High readings can be caused by poor drainage or leaks and will affect the finished flooring if not rectified.

## Installation Instructions

When installing NuCore as a floating system the span of both the width and length of the floor should not exceed 10 x 10 meters. Expansion joints should be fitted to compartmentalise a larger floor area so it can move correctly as a raft. This can be done in doorways or natural transitions from one area to another. At doorways or transitions, the door jambs or frames need to be undercut well and all material removed for the timber floor to slide under and move freely. A gap of 1mm is recommended above the surface of the product.

**The installer must use reasonable selectivity and remove any faulty boards that should not be laid or dock any faults to ensure the finished floor meets industry and customer standards.**

As a general rule, we recommend at least a 10-15mm expansion gap be allowed around the perimeter of a floating floor. At no point should the flooring be in contact laterally with any solid structure. The flooring must be allowed to move independently, or damage will occur, such as cupping, peaking, gapping, or squeaking. This expansion gap allowance can also be affected by the climatic conditions of the site.

**If you are unsure about the product and how it will respond to the environment, then please contact the manufacturer for guidance.**

Flooring on stairs must be directly stuck with the appropriate polyurethane / MS adhesive to the existing tread & riser, with matching stair nosing to be fitted on the front edge of each step. Also please make sure that the stair nosing meets the slip test guidelines for each state in Australia.

For the purposes of AS1428 & AS4586 NuCore stair nosing is rated to P2. This will be insufficient for many installations and additional stair-nosing treatment will be required for compliance. We recommend applying Anti-Slip Tape which can be supplied through your retailer.

EVERLAY 2 or 3mm closed cell foam underlay, fitted with the plastic moisture barrier must be installed prior to any floating floor installation. Also be aware that the moisture barrier on underlays can be ineffective against high moisture within the concrete slab, in excess of 75% RH-ASTM 2170-02. In this case, it is strongly advised that you first install a 200um plastic moisture barrier sheet first on the concrete and then the underlay. Overlap the plastic moisture barrier sheet by at least 150mm and tape joins fully with moisture-proof tape. All underlay joints should be sealed with a moisture-proof tape.

All trims or skirting must be fitted with a 1mm clearance gap above the flooring to allow for the correct raft movement. This gap must not be caulked or siliconed in any way.

**It is also highly recommended that during the installation process the correct PPE (Personal Protection Equipment) is used by the installer. These include P2-rated face masks, protective glasses or face shields, steel-capped boots and protective work gloves.**

During installation, no adjacent end joints should be closer than 200mm apart or any end boards less than 200mm in length.

## Post Installation

After installation, if other trades are still to complete their work, a breathable protective covering should be installed over the flooring. Non-permeable product should not be used as this will damage the product due to an increase in moisture. The flooring must be clean and clear of any debris prior to the fitting of protection.

We do not recommend adhesive tape is applied to any of our flooring products.

**NuCore flooring is filed with wax in the click system. If the wax migrates to the surface, it should be removed.**

**Never use any of the following products (or similar in nature) on your floor: ammonia-based cleaners, acrylic finishes, wax-based products, bleach, polishes, oil soap, abrasive cleaning soaps, or acidic materials such as vinegar. Many of these products pit or etch the finish of your flooring or prevent the proper use of recommended maintenance materials.**

## Installation over hydronic underfloor heating

The in-slab underfloor heating needs to be started and run at the desired temperature for at least 2 weeks prior to the installation of flooring.

**NOTE:** The slab surface temperature must not exceed 26 degrees Celsius at any time.

After 14 days, turn off the slab heating and allow 4 days to pass in order to allow the subfloor to cool down and reach room temperature before installation.

After floor installation is complete, your flooring requires gradual acclimatisation in conjunction with the heating system.

The heating system temperature is to be increased by 2 degrees increments each day until the desired temperature is reached (not exceeding 26 degrees Celsius) and when turning heating off, also decrease by 2 degrees increments each day until it is off.

Shrinking between boards, cracking and minor cupping can be expected when installing hydronic underfloor heating and does not constitute as a product defect.

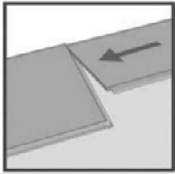
**If the flooring product has a 5G or drop locking system and is floated over a heated slab it is required that Crosslinked PVA glue be used as per the regular tongue and groove installation.**

**No other form of underfloor heating is recommended.**

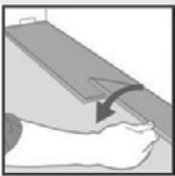
## Installation of the Click systems



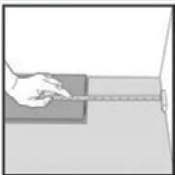
**Fig 1.** First plank, first row. Place a spacer of 15mm thickness to the left and position the plank against the wall. Later, after 3 rows, you can easily position the flooring against the front wall with distances  $\approx$  15mm.



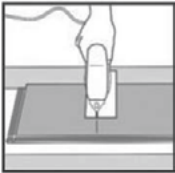
**Fig 2.** Second plank, first row place this plank gently and tight to the short end of the first one.



**Fig 3.** Fold the panel down in a single action movement. During the fold down, make sure the panels are tight against each other. Afterwards press down or slightly tap down at the short end just installed till it clicks. No major force is required.



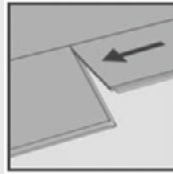
**Fig 4.** At the end of the first row, put a spacer  $\approx$  15mm, to the wall and measure the length of the last plank to fit.



**Fig 5.** Cut with a jig saw - hardwood turned down to eliminate/reduce damage to the face of the panel. Or if cutting using a hand saw, cut it with the hardwood visible face up. Then install it as previous plank.



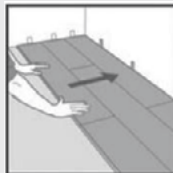
**Fig 7.** General distances between short ends. Minimum distance between short ends of planks in parallel rows shall not be less than 500mm. This is for stability of the floor.



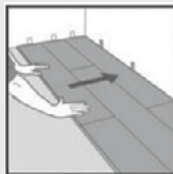
**Fig 8a.** Second plank, second row place the panel at an angle into the groove of the previous row making sure that the end of the panel is tight/flush to the short end of the previous panel.



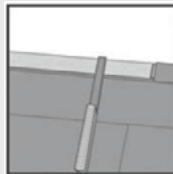
**Fig 8b.** Fold the panel down in a single action movement with a slight press to the left to the short end of the previous panel. Again using the tapping block tap it against the long end into the previous row. During the fold down, make sure the panels are tight against each other.



**Fig 8c.** As it flattens itself to the floor, press or gently tap the top of the short end of the installed panel until it clicks. Finish installing this plank by tapping it with a tapping block on the long side to ensure secure installation.



**Fig 9.** After 2-3 rows, adjust the distance to the front wall by placing spacers  $\approx$  15mm. Once the adjustment is done against the main wall, continue to install till the last row.



**Fig 10.** Last row (and perhaps also first row). The minimum width of the last plank should be **NOT LESS** than 50mm. Remember distance to wall is 15mm.  
**TIP:** Put a spacer before measuring. Cut the panels lengthwise and glue the short ends. See instructions below.

## Special Instructions



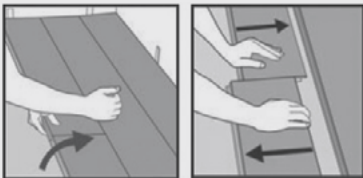
### Special Installations - Small Panel Widths

Joining at short ends length cut panels. Cut the tongue at the same time you cut the length of the panel and install as shown above. Please note that the smallest width of a panel is 50mm at the last row. If it is not, the first row width must be adjusted. This can easily be calculated when measuring the room with before installation. Cut off the locking element with a chisel, push the planks horizontally together. If necessary, place some spacers between the last panel and the wall to keep the planks together during the curing time of the glue.



### Radiator Pipes

Installation at radiators. Drill the holes 20mm larger than the diameter of the pipes. Cut out the panel (with the thinnest blade possible) as per diagram. Install the plank as per normal. Glue the cut out piece back again.

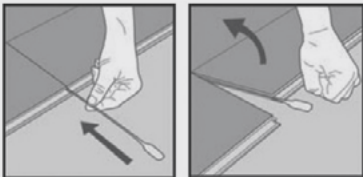


### Disassembling (without tool)

Your floor can very easily be disassembled, which enables replacement during installation and also during use.

**Fig 11.** Separate the whole row by carefully lifting up and slightly knocking just above the joint. Fold up and release the whole long side.

**Fig 12.** Disassemble the panels by sliding horizontally. (Do not fold up).



### Disassembling (with tool)

**Fig 13.** Place a special Vålinge Release Tool into the joint.

**Fig 14.** Keep the left plank down to the floor and release the right plank - fold it up.